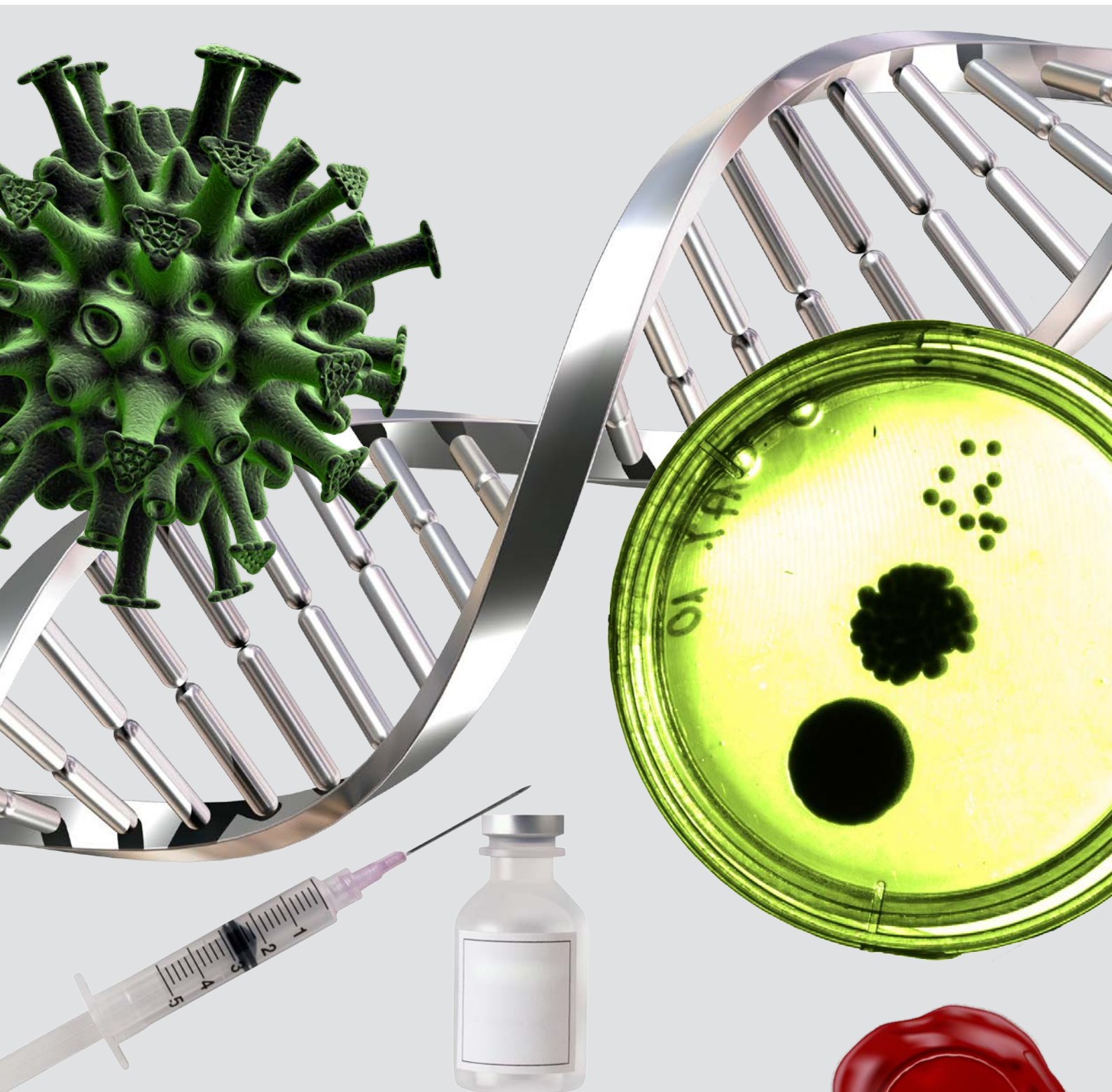


# GMP CERTIFIED PCR ANALYSES

STATENS  
SERUM  
INSTITUT



Statens Serum Institut  
Artillerivej 5  
2300 København S  
Danmark

T 3268 3268  
F 3268 3868  
@ serum@ssi.dk  
w ssi.dk

# GMP Certified Real-time PCR Analyses

---

## What do we offer

- GMP and ISO 17025 certified laboratory
- Sensitive and specific real-time PCR analyses custom-made for your particular application, e.g. human, animal, environmental or process control applications
- High through-put detection through state-of-the-art equipment and integrated it-solutions

## Why should you choose us

- Superior expertise in assay development. We know the tricks to make an assay work – from sampling, via sample pre-processing, nucleic acid extraction to real-time PCR design.
- Quality control in highest focus. Data integrity is ensured through automation and data-trending. We cooperate with QA-officers from SSI's quality assurance department, who have many years of experience producing vaccines to customers around the globe.
- Flexible and efficient - At any time, we can set up assays and analyze all kinds of sample types and targets.

## GMP Certified Technology Platforms

- Hamilton STARlet pipetting robots
- MagNA Pure 96 extraction robots
- Stratagene MX3005P real-time PCR machines

## Who are we?

SSI is a public enterprise under the Danish Ministry of Health. For more than 100 years SSI's main task has been to secure the preparedness towards infectious diseases and congenital disorders. The tasks have been expanded, and today, SSI is an international research and service enterprise.

## Contact

Claus Nielsen, Director  
Microbiological Diagnostics & Virology  
Statens Serum Institut  
5 Artillerivej, 85/322  
DK-2300 Copenhagen S  
Denmark  
T +45 3268 3280  
@ GMPlab@ssi.dk

---