

## Individually notifiable diseases

Number of notifications received in the Department of Epidemiology, SSI (2009 figures are preliminary)

Table 1	Week 2 2010	Cum. 2010 <sup>1)</sup>	Cum. 2009 <sup>1)</sup>
AIDS	1	1	1
Cholera	0	0	0
Creutzfeldt-Jakob	0	2	0
Food-borne diseases	2	6	18
of these, infected abroad	1	2	0
Gonorrhoea	8	21	27
Hepatitis A	1	2	0
of these, infected abroad	0	0	0
Hepatitis B (acute)	0	1	0
Hepatitis B (chronic)	1	3	0
Hepatitis C (acute)	0	0	0
Hepatitis C (chronic)	9	13	0
HIV	4	7	21
Legionella pneumonia	4	7	4
of these, infected abroad	0	1	0
Leptospirosis	0	0	0
Measles	0	0	3
Meningococcal disease	2	5	6
of these, group B	0	0	3
of these, group C	1	1	0
of these, unspec. + other	0	0	0
Mumps	1	1	0
Neuroborreliosis	1	1	0
Ornithosis	0	0	0
Pertussis (children < 2 years)	3	3	5
Purulent meningitis			
Haemophilus influenzae	0	0	1
Listeria monocytogenes	0	0	0
Streptococcus pneumoniae	3	3	7
Other aethiology	0	0	0
Unknown aethiology	0	0	0
Under registration	0	0	1
Rubella (during pregnancy)	0	0	0
Rubella (congenital)	0	0	0
Shigellosis	3	4	7
of these, infected abroad	2	3	7
Syphilis	5	13	8
Tetanus	0	0	0
Tuberculosis	7	11	21
Typhoid/paratyphoid fever	0	0	0
of these, infected abroad	0	0	0
VTEC/HUS	4	7	3
of these, infected abroad	1	1	0

Table 1, comments

In 2010, none of the following have been reported: Anthrax, botulism, cholera, diphtheria, haemorrhagic fever, leprosy, plague, polio, rabies, typhus exanthematicus

1) Cumulative no. 2010 and corresponding period 2009

## Selected laboratory diagnosed infections

Number of specimens, isolates, and/or notifications received at Statens Serum Institut

Table 2	Week 2 2010	Cum. 2010 <sup>2)</sup>	Cum. 2009 <sup>2)</sup>
Bordetella pertussis (all ages)	2	3	5
Gonococci	18	33	9
of these, females	4	7	1
of these, males	14	26	8
Listeria monocytogenes	2	3	2
Mycoplasma pneumoniae			
Resp. specimens 3)	3	6	5
Serum specimens 4)	12	17	3
Streptococci 5)			
Group A streptococci	4	11	15
Group B streptococci	0	2	3
Group C streptococci	1	3	1
Group G streptococci	2	17	5
S. pneumoniae	21	100	97

Table 3	Week 53 2009	Cum. 2009 <sup>2)</sup>	Cum. 2008 <sup>2)</sup>
MRSA	17	807	-
Pathogenic int. bacteria <sup>3)</sup>			
Campylobacter	9	3288	3441
S. Enteritidis	2	601	637
S. Typhimurium	4	777	1992
Other zoon. salmonella	7	750	1015
Yersinia enterocolitica	0	225	330
Verocytotoxin-prod. E.coli	4	172	158
Enteropathogenic E. coli	3	223	215
Enterotoxigenic E. coli	2	343	417

Tables 2 & 3, comments

2) Cumulative no. 2010 and corresponding period 2009

3) Respiratory specimens with positive PCR

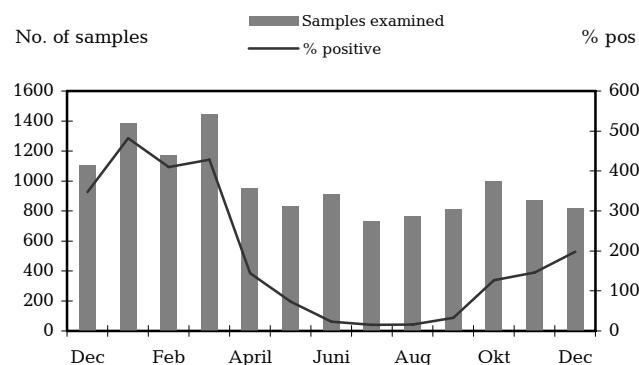
4) Serum specimens with pos. complement fixation test

5) Isolated in blood or spinal fluid

6) See also www.germ.dk

## Norovirus 2008-2009

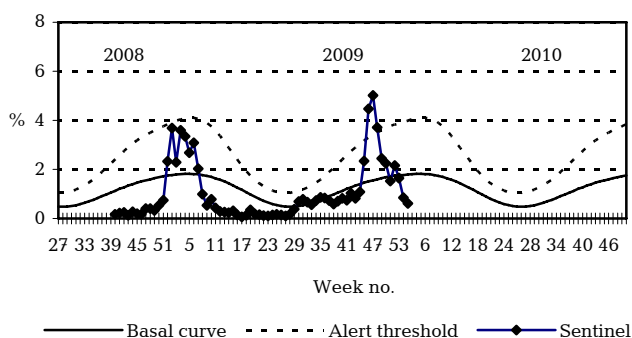
Examined samples and percent positive, Dec 08 - Dec 09



Samples from clinical microbiology departments at Odense University Hospital, Copenhagen University Hospital, and the Department of Virology, SSI

## Sentinel surveillance of the influenza activity

Weekly percentage of consultations, 2008/2009/2010



Sentinel: Influenza consultations (as percentage of total consultations)

Basal curve: Expected frequency of consultations under non-epidemic conditions

Alert threshold: Possible incipient epidemic