

Individually notifiable diseases

Number of notifications received in the Department of Epidemiology, SSI (2009 figures are preliminary)

Table 1	Week 10 2010	Cum. 2010 ¹⁾	Cum. 2009 ¹⁾
AIDS	0	14	6
Cholera	0	0	0
Creutzfeldt-Jakob	0	5	1
Food-borne diseases	3	48	82
of these, infected abroad	0	15	12
Gonorrhoea	8	124	119
Hepatitis A	1	9	7
of these, infected abroad	1	2	5
Hepatitis B (acute)	0	8	5
Hepatitis B (chronic)	10	43	36
Hepatitis C (acute)	0	0	2
Hepatitis C (chronic)	16	84	62
HIV	6	43	60
Legionella pneumonia	2	25	22
of these, infected abroad	0	4	0
Leptospirosis	0	0	0
Measles	0	1	8
Meningococcal disease	1	18	25
of these, group B	0	1	8
of these, group C	1	5	3
of these, unspec. + other	0	0	0
Mumps	0	2	2
Neuroborreliosis	1	5	3
Ornithosis	0	0	0
Pertussis (children < 2 years)	5	19	22
Pneum. disease, invasive (IPD) ²⁾	4	37	35
Purulent meningitis			
Haemophilus influenzae	0	0	2
Listeria monocytogenes	0	2	2
Other aethiology	0	3	2
Unknown aethiology	0	0	1
Under registration	0	0	0
Rubella (during pregnancy)	0	0	0
Rubella (congenital)	0	0	0
Shigellosis	4	23	20
of these, infected abroad	3	18	20
Syphilis	20	76	55
Tetanus	0	0	0
Tuberculosis	4	66	88
Typhoid/paratyphoid fever	1	12	3
of these, infected abroad	1	10	0
VTEC/HUS	2	27	24
of these, infected abroad	0	6	5

Table 1, comments

In 2010, none of the following have been reported:
Anthrax, botulism, cholera, diphtheria, haemorrhagic fever, leprosy, plague, polio, rabies, typhus exanthematicus

¹⁾ Cumulative no. 2010 and corresponding period 2009

²⁾ Meningitis, all age groups, invasive pneumococcal disease

Selected laboratory diagnosed infections

Number of specimens, isolates, and/or notifications received at Statens Serum Institut

Table 2	Week 10 2010	Cum. 2010 ²⁾	Cum. 2009 ²⁾
Bordetella pertussis (all ages)	0	30	29
Gonococci	14	107	77
of these, females	2	27	16
of these, males	12	80	61
Listeria monocytogenes	0	7	13
Mycoplasma pneumoniae			
Resp. specimens ⁴⁾	1	27	21
Serum specimens ⁴⁾	8	64	36
Streptococci ⁵⁾			
Group A streptococci	5	44	49
Group B streptococci	3	22	18
Group C streptococci	1	8	6
Group G streptococci	2	30	34
S. pneumoniae	27	276	343

Table 3	Week 8 2010	Cum. 2009 ²⁾	Cum. 2008 ²⁾
MRSA	12	93	114
Pathogenic int. bacteria ⁷⁾			
Campylobacter	32	315	214
S. Enteritidis	6	46	35
S. Typhimurium	4	51	158
Other zoon. salmonella	6	84	97
Yersinia enterocolitica	1	22	28
Verocytotoxin-prod. E.coli	3	19	18
Enteropathogenic E. coli	3	27	22
Enterotoxigenic E. coli	10	88	26

Tables 2 & 3, comments

³⁾ Cumulative no. 2010 and corresponding period 2009

⁴⁾ Respiratory specimens with positive PCR

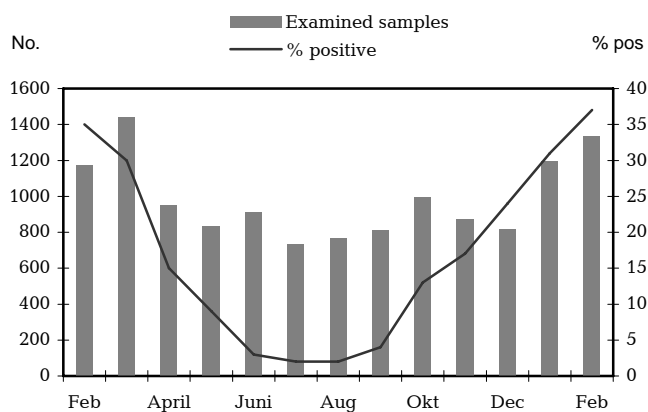
⁵⁾ Serum specimens with pos. complement fixation test

⁶⁾ Isolated in blood or spinal fluid

⁷⁾ See also www.germ.dk

Norovirus 2009-2010

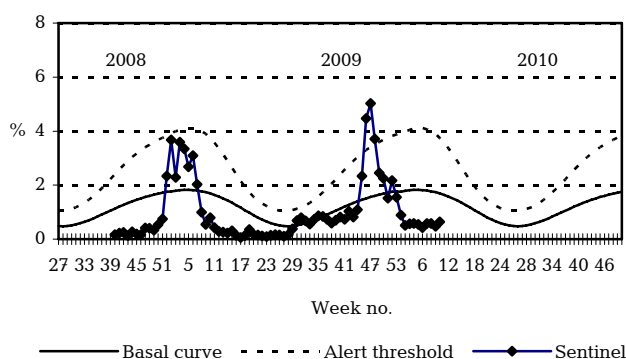
Examined samples and percent positive, Feb 09 - Feb 10



Samples from clinical microbiology departments at Odense University Hospital, Copenhagen University Hospital, and the Department of Virology, SSI

Sentinel surveillance of the influenza activity

Weekly percentage of consultations, 2008/2009/2010



Sentinel: Influenza consultations (as percentage of total consultations)

Basal curve: Expected frequency of consultations under non-epidemic conditions

Alert threshold: Possible incipient epidemic