



According to Danish National Health Insurance data, a total of 118,412 children were vaccinated against MMR in 2001. Coverage is calculated as for 2000, EPI-NEWS 22-23/00. Coverage of MMR 1 decreased in all counties except Viborg County, Table 1. For MMR 2, coverage also increased only in Viborg County, while it was unchanged in Bornholm and Ribe Counties. Total coverage of MMR 1 and 2 for the period 1992-2001 appears in Fig. 1.

## Comments

On a national basis, coverage of MMR 1 fell by 6% relative to 2000. The effect of the increased effort can still be traced, as the coverage of MMR 1 in nine counties was still at least 95%. In 12 counties, coverage was higher than or at the same level as in 1999, EPI-NEWS 22-23/00. For MMR 2, coverage fell by 4% relative to 2000, and to the same level as in 1999. In 12 counties, coverage was lower than in 1999.

The substantial decrease in relation to the high MMR coverage in 2000 can only partially be explained by the fact that older children were also vaccinated that year, EPI-NEWS 34/01. There is therefore still a need for a special effort to reach the objective of at least 95% coverage in all counties.

(A. H. Christiansen, S. Glismann, Department of Epidemiology)

## MEASLES OUTBREAK OVER

The measles outbreak started in North Jutland County at the end of December 2001, EPI-NEWS 5/02 and 6/02. The last child developed a rash on 5 February, and the outbreak is now considered to be over.

Notification was made of a total of 24 children with measles; 21 were resident in North Jutland County, and three in Copenhagen Municipality.

**Table 2. Measles outbreak December 2001 – February 2002.**

**No. of notified cases by age, gender, vaccination- and admission status**

Age (yrs)	+		÷		
	M	F	MMR	MMR	Adm.
< 2	6	3		9	8
2-5	3	2		5	4
6-10	6	3	3	6	6
11-13	1	0		1	0
Total	16	8	3	21	18

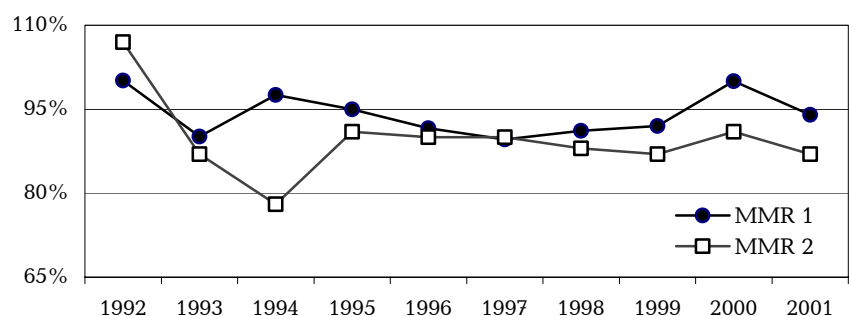
## MMR VACCINATION 2001

No. 17/18, 2002

**Table 1. Coverage of MMR 1 and 2 vaccination 2001 and 2000, by county. Changes in percentage relative to 2000 in ( )**

County	MMR 1				MMR 2			
	2001		%	2000	2001		2000	
	No.	%			No.	%		
Cph. Municip.	6,400	88	(÷8)	96	3,061	81	(÷19)	100
Frb. Municip.	1,221	88	(÷6)	94	444	80	(÷14)	94
Copenhagen	7,280	97	(÷7)	104	6,430	85	(÷3)	88
Frederiksborg	4,386	96	(÷7)	103	3,935	83	(÷7)	90
Roskilde	2,918	97	(÷6)	103	2,455	85	(÷5)	90
West Zealand	3,292	97	(÷3)	100	3,142	85	(÷3)	88
Storstrøm	2,572	95	(÷4)	99	2,734	87	(÷2)	89
Bornholm	398	99	(÷2)	101	513	90	(0)	90
Funen	5,140	91	(÷4)	95	4,949	88	(÷4)	92
South Jutland	2,913	96	(÷4)	100	3,022	89	(÷5)	94
Ribe	2,632	91	(÷5)	96	2,697	90	(0)	90
Vejle	4,370	97	(÷8)	105	3,804	89	(÷5)	94
Ringkøbing	3,287	93	(÷7)	100	3,346	91	(÷4)	95
Aarhus	7,942	94	(÷7)	101	6,870	89	(÷3)	92
Viborg	2,728	95	(+5)	90	2,612	85	(+3)	82
North Jutland	5,234	90	(÷9)	99	5,685	91	(÷1)	92
Total	62,713	94	(÷6)	100	55,699	87	(÷4)	91

**Fig. 1. Overall coverage of MMR 1 and 2 vaccination, 1992-2001**



For 18 children, the source of infection was known, either in connection with hospital admission or other contact with a child with measles. One child was infected during admission in North Jutland and subsequently infected two children during a later admission in Copenhagen. A total of 21 children were unvaccinated. Of these, five were <15 months. Three children had been vaccinated once, Table 2.

For 20 children, the diagnosis was serologically verified. The other four were siblings of verified cases. A total of 18 children had been admitted or seen in hospital in connection with their measles.

(A. H. Christiansen, S. Glismann, Dept. of Epidemiology, H. Hamburger, MOH, North Jutland County)

## OUTBREAK – GREECE

The Greek health authorities have reported 44 patients with serious vi-

rus-like illness since the start of April, of whom three adult patients died. The patients are predominantly adults and from the whole country. There have been no reports of incidents of illness among travellers to Greece. Enterovirus, probably Coxsackie virus, has been isolated from several patients, and further investigation is in progress. There is no public health safety concern, and no special restrictions on travel to Greece are recommended. The situation can be followed at: [www.ssi.dk](http://www.ssi.dk). (Department of Epidemiology)

## TRAVEL MEDICINE CONGRESS IN COPENHAGEN

The 3rd Scandinavian Forum for Travel Medicine will be held on 22-24 May, 2002.

Further information is available at: [www.forum2002.ics.dk](http://www.forum2002.ics.dk).

(Department of Epidemiology)

1 May 2002

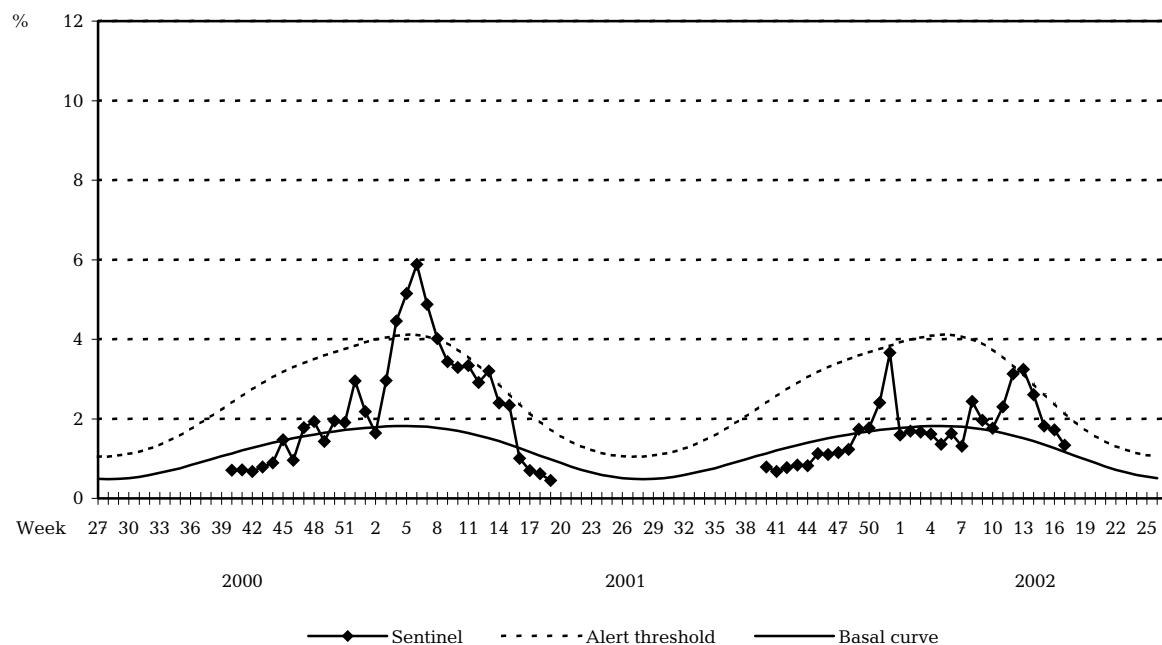
**Monthly no. of serum specimens positive for *Mycoplasma pneumoniae* by complement fixation test, 1st quarter 2002, Statens Serum Institut**

	January	February	March
Positive specimens during current period	93	85	58
Positive specimens during same period of previous year	60	44	41
Average for same period of the 5 previous years	134	84	58

(Dept. of Respiratory Infections, Meningitis and STIs)

**Sentinel surveillance of influenza activity**

Weekly percentage of consultations, 2000/2001/2002



**Sentinel:** Influenza consultations as % of total consultations

**Basal curve:** Expected frequency of influenza consultations under non-epidemic conditions

**Alert threshold:** Possible incipient epidemic

(Dept. of Epidemiology)