



ANNUAL REPORT 2001

No. 13/14, 2002

CASES OF INDIVIDUALLY NOTIFIED DISEASES

This report includes the number of cases of individually notifiable diseases with onset in 2001. Figures may be adjusted later due to late notifications or the receipt of further data. Totals for 2000 and the annual average for the 5-year period 1996-2000, with the lowest and highest number of annual cases during this period, are given for comparison. No cases of the following individually notifiable diseases have been notified:

Anthrax, haemorrhagic fever, plague, typhus and rabies.

	2001	2000	1996-2000	Annual average (min.-max.)
Hepatitis A	63	81	95	(81-115)
B - acute	45	63	84	(59-101)
B - chronic ¹⁾	136	-	-	-
C - acute	7	13	20	(13-28)
C - chronic ¹⁾	196	-	-	-
Meningococcal disease	166	161	196	(161-236)
A	2	1	< 1	(0-1)
B	99	101	116	(98-132)
C	27	19	30	(19-45)
other + unspecified	38	40	49	(36-63)
Other bacterial meningitis				
S. pneumoniae	108	78	101	(78-131)
H. influenzae	1	2	4	(2-6)
L. monocytogenes	4	6	6	(4-8)
other aethiology	15	10	13	(10-17)
unknown aethiology	25	31	25	(21-31)
Measles	13	14	46	(6-119)
Mumps	15	35	29	(20-40)
Rubella during pregnancy	0	0	2	(0-8)
congenital	0	0	0	(0-0)
AIDS	64	57	94	(57-158)
Botulism	0	0	< 1	(0-1)
Cholera	0	0	< 1	(0-3)
Creutzfeldt-Jakob disease ²⁾	3	4	-	-
Diphtheria	0	0	< 1	(0-2)
Food-borne diseases	893	771	1047	(771-1303)
Legionella pneumonia	105	92	93	(67-120)
Leprosy	0	0	< 1	(0-2)
Leptospirosis	4	7	6	(2-14)
Neuroborreliosis	53	64	29	(14-64)
Paratyphoid fever	17	9	17	(8-45)
Pertussis in children < 2 years	200	166	152	(88-199)
Poliomyelitis	0	0	0	(0-0)
Psittacosis	9	31	23	(15-31)
Shigella dysentery	148	154	107	(55-154)
TB total	517	548	524	(474-548)
pulmonary	358	409	362	(325-409)
Tetanus	1	4	2	(1-4)
Typhoid fever	17	22	18	(13-22)
Verotoxin-producing E. coli (VTEC) ³⁾	91	48	-	-
Haemolytic uraemic syndrome (HUS) ³⁾	1	1	-	-

1) Chronic hepatitis B and C were made notifiable from 1 May 2000. In 2001, 14 patients were notified as having both chronic hepatitis B and C. In this report these patients are included under both hepatitis B and hepatitis C.

2) Creutzfeldt-Jakob disease (CJD) was made notifiable from 1 May 1997. Cases are recorded by year of death. All cases are sporadic CJD. No cases of variant CJD have been notified.

3) VTEC og HUS were made notifiable from 1 May 2000.

Patients with laboratory-diagnosed gonorrhoea, by sex and county

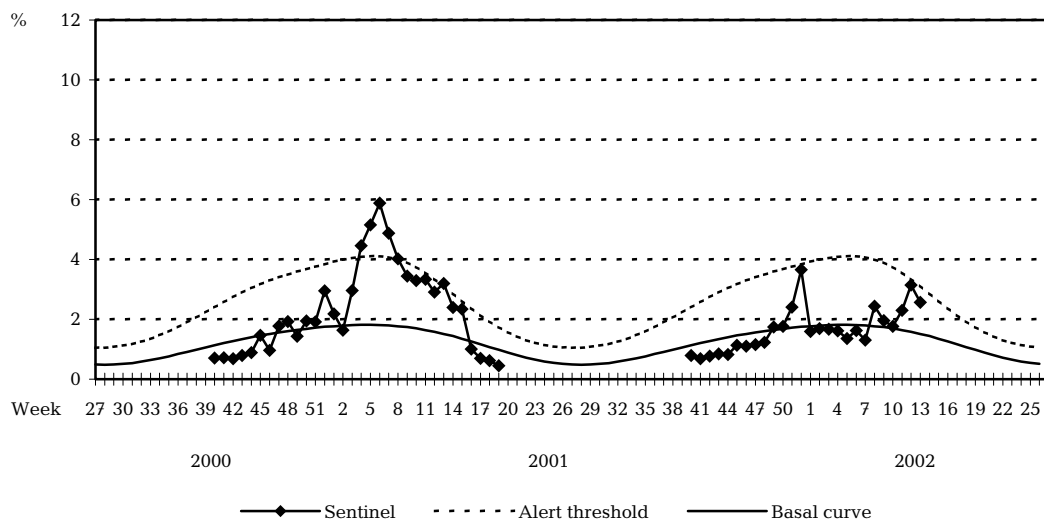
3rd and 4th quarters, 2001, compared with the same period of 2000

County	3rd quarter				4th quarter			
	2001		2000		2001		2000	
	M	F	Total		M	F	Total	
Cph. & Frb. Municip.	39	6	45	52	26	4	30	36
Copenhagen	2	1	3	3	7	3	10	5
Frederiksborg	5	1	6	6	2	-	2	5
Roskilde	3	-	3	2	1	-	1	2
West Zealand	3	-	3	1	1	-	1	3
Storstrøm	1	1	2	-	1	1	2	1
Bornholm	1	-	1	1	-	-	-	1
Funen	1	-	1	2	2	-	2	13
South Jutland	1	1	2	1	1	-	1	6
Ribe	4	-	4	1	2	-	2	-
Vejle	7	-	7	-	3	-	3	1
Ringkøbing	2	-	2	1	2	1	3	-
Aarhus	10	-	10	4	6	2	8	2
Viborg	-	-	-	-	1	-	1	-
North Jutland	5	1	6	-	2	1	3	8
Total	84	11	95	74	57	12	69	83

(Dept. of Respiratory Infections, Meningitis and STIs)

Sentinel surveillance of influenza activity

Weekly percentage of consultations, 2000/2001/2002



- Sentinel:** Influenza consultations as % of total consultations
- Basal curve:** Expected frequency of influenza consultations under non-epidemic conditions
- Alert threshold:** Possible incipient epidemic

(Dept. of Epidemiology)