

MMR VACCINATION 1999

No. 22/23, 2000

According to Health Service and National Board of Health data, a total of 112,810 children were MMR-vaccinated in 1999. MMR vaccinations are registered by just two codes, EPI-NEWS 48/98, MMR 1 for the first vaccination and MMR 2 for the second, irrespective of the child's age. To compare the acceptance of MMR 1 during 1999 with previous years, new calculations have been made for these data, Table 1 and Fig. 1. MMR 1 vaccinations shown in Table 1 now comprise the whole of the 1-10-year age group and not just the 1-year-olds (<2 years), as hitherto. The revised basis leads to an increase in the calculated MMR 1 acceptance by a few percent, EPI-NEWS 41/99, which is thus not an expression of a real rise. The method of calculating MMR 2 acceptance remains unchanged.

MMR 1 vaccination

Vaccination acceptance rose in most counties, but the overall acceptance rose by only 1% from 1998, Table 1. Acceptance was highest in Roskilde and West Zealand Counties, which together with Copenhagen Municipality and Ringkøbing County showed the greatest rises. Acceptance fell in six counties, the largest falls occurring in Storstrøm and Ribe.

MMR 2 vaccination

Overall acceptance fell by 1% from 1998, Table 1, thus continuing the falling trend seen since 1996, when acceptance was 91%. Acceptance fell in six counties, the largest falls occurring in Ribe County and Copenhagen Municipality, which also showed the overall lowest rates. Acceptance rose in eight counties in 1999, the greatest rise occurring in West Zealand.

Fig. 2 shows the quarterly distribution of MMR 2 vaccinations during 1998 and 1999 in percentage terms.

Fig. 2. Quarterly distribution (%) of MMR 2 vaccinations, 1998 and 1999

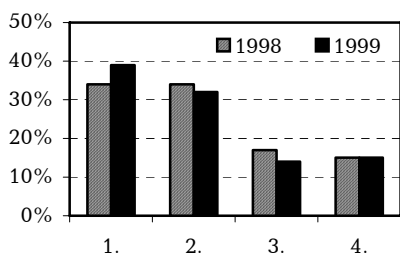
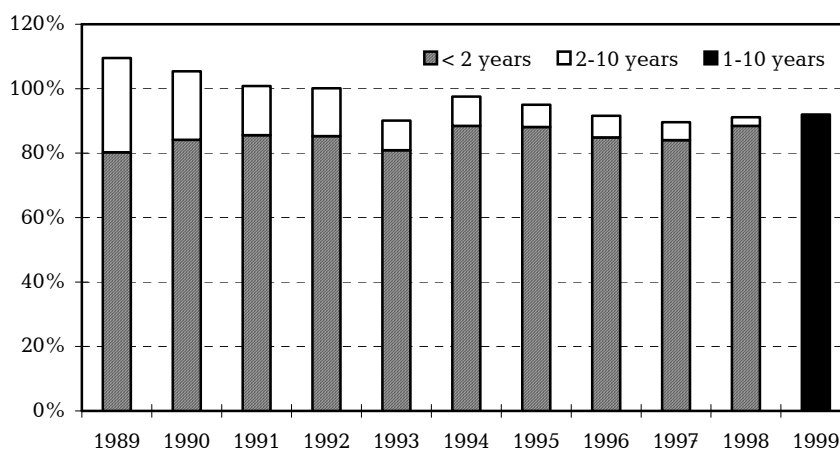


Table 1. Acceptance of MMR 1 (1-10 years, see text) and MMR 2 vaccinations in 1998 and 1999, by county. % change from 1998 in ().

County	MMR 1			MMR 2		
	1999		1998	1999		1998
	No.	%	%	No.	%	%
Cph. Municip.	5,895	88 (+4)	84	2,429	74 (÷7)	81
Frb. Municip.	1,085	85 (+2)	83	428	85 (÷3)	88
Cph. County	7,216	94 (+1)	93	5,815	86 (+3)	83
Frederiksborg	4,286	92 (÷1)	93	3,602	84 (0)	84
Roskilde	2,911	97 (+4)	93	2,316	90 (+1)	89
West Zealand	3,280	97 (+6)	91	3,105	92 (+4)	88
Storstrøm	2,334	88 (÷5)	93	2,585	90 (+3)	87
Bornholm	422	94 (+1)	93	505	91 (+3)	88
Funen	5,207	94 (÷1)	95	4,495	86 (÷2)	88
South Jutland	2,873	92 (+1)	91	2,876	90 (+2)	88
Ribe	2,491	87 (÷3)	90	2,233	79 (÷12)	91
Vejle	4,133	93 (÷2)	95	3,633	91 (+3)	88
Ringkøbing	3,404	94 (+4)	90	3,110	91 (+1)	90
Aarhus	8,002	95 (+3)	92	6,356	91 (÷1)	92
Viborg	2,653	92 (+1)	91	2,559	87 (0)	87
North Jutland	5,422	91 (+1)	90	5,149	90 (÷1)	91
Total	61,614	92 (+1)	91	51,196	87 (÷1)	88

Fig. 1. Acceptance of MMR 1 vaccination, 1989-1999



Comments

The gently rising trend in MMR 1 acceptance seen over the last three years (Fig. 1) must be maintained and should be encouraged. To prevent epidemics in the young, it is of decisive importance to raise MMR 2 acceptance. As 71% of MMR 2 vaccinations in 1998 and 1999 were given during the first two quarters, Fig. 2, a special drive in the latter half of the year might well increase MMR 2 acceptance. Analysis of vaccination acceptance by age-group, or better still, by birth year, is under preparation. For this purpose it is essential that the child's personal number/date of birth, and not

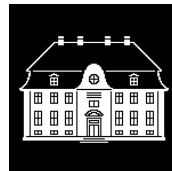
the mother's, is entered on the registration form.

(A. H. Christiansen, S. Glismann, T. Rønne, Dept. of Epidemiology)

NOTIFIABLE DISEASES

The National Board of Health's communication on the notification of infectious diseases, etc., and accompanying guidelines have been revised with effect from 1 May 2000. The changes will be reported in a future issue of EPI-NEWS. This has led to a revision of Form 1507. Individual notifications should now be made on Form 1515.

(S. Samuelsson, Dept. of Epidemiol.)



Patients with positive cultures of pathogenic intestinal bacteria, 2000, by county

	Campylobacter		Yersinia enteritidis		S. typhimurium		S. enteritidis		Other zoon. Salmonella spp.	
	March	April	March	April	March	April	March	April	March	April
	Copenhagen Municip.	37	28	3	1	4	3	6	8	11
Frederiksberg Municip.	3	2	1	-	-	-	-	-	1	1
Copenhagen County *	1	-	-	-	-	-	-	-	2	3
Frederiksborg	20	8	-	-	3	2	6	2	4	2
Roskilde	20	9	1	1	-	1	3	4	2	1
West Zealand	6	2	-	-	2	2	6	-	3	2
Storstrøms	12	3	3	1	-	2	4	4	3	3
Bornholms	3	3	-	-	-	-	-	-	1	1
Funen	23	17	2	2	4	4	12	3	2	2
South Jutland	11	13	-	-	2	6	4	5	2	3
Ribe	20	9	3	1	3	3	3	2	5	2
Vejle	13	9	-	1	3	1	5	8	1	3
Ringkøbing	7	12	2	-	2	1	1	3	3	1
Aarhus	32	19	2	3	4	3	7	4	6	4
Viborg	10	7	-	-	-	3	-	-	1	2
North Jutland	22	9	2	1	2	8	6	3	1	2
Not stated	-	-	-	-	-	-	-	-	-	-
Total, March-April 2000	240	150	19	11	29	39	63	46	48	42
Total, March-April 1999	154	156	20	23	41	40	98	98	41	49

* Figures for Copenhagen County comprise only part of the diagnosed cases

(Dept. of Gastrointestinal Infections)

